



# Issue Plan of Czech Postage Stamps 2022



Česká pošta



## Design a series of your own stamps with additional prints!

Your motive will be printed on a sheet of classic stamps with coupons. Contact us to create an original gift for collectors as well as for ordinary use.

*Give your letters a face*



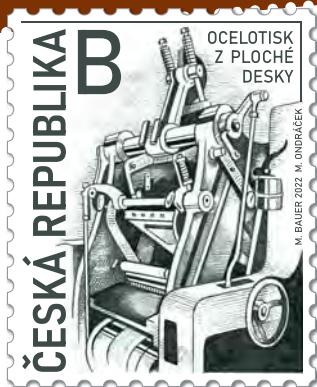
# Table of contents

## CZECH STAMP ISSUE PLAN 2022

Tradition of Czech Stamp Design: Recess printing from flat plates – WAITE .....	4
Molière .....	6
Personalities: Miloš Forman .....	7
Works of Art on Postage Stamps: Czech Gothic murals .....	8
Works of Art on Postage Stamps: Emil Filla .....	10
150 Years of the Košice-Bohumín Railway .....	12
Technical Monuments: Schwarzenberg Canal .....	13
EUROPA: Stories and myths .....	15
Czech Actors and Actresses: Stella Zázvorková and Jan Werich .....	16
50 Years of the Philatelic Youth Olympiad .....	18
150 Years of the Czech Beekeepers' Association .....	20
Czech Presidency of the Council of the European Union .....	22
International Council of Museums (ICOM) General Conference Prague .....	23
Young Animals: Kittens .....	24
Nature Protection: Mácha's Region .....	26
Emil Zátopek and Dana Zátopková .....	29
Personalities: Jindřich Fügner .....	30
Nature Protection: The Chudobín pine .....	31
St Wenceslas Rotunda in Prague .....	32
European Stamp Exhibition LIBEREC 2022 .....	33
The Landscape for Breeding and Training of Ceremonial Carriage Horses at Kladruby nad Labem .....	34
Works of Art on Postage Stamps: Jaroslav Panuška .....	35

## Tradition of Czech Stamp Design:

## Recess printing from flat plates – WAITE



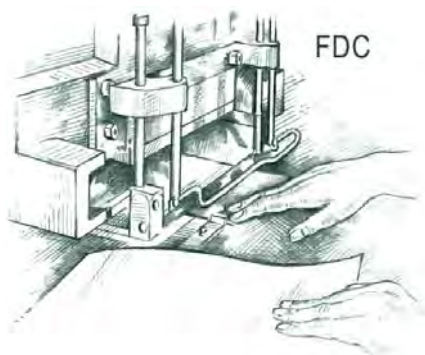
The stamp depicts a detail of the print press. The engraved steel plate with Czech Post's logo on the coupon refers to both the Post Office and the art of engraving. The first day cover shows a detail of hands feeding the paper in the press. The first day cancellation completes the theme with a detail of a tin container with intaglio printing ink and a spatula next to it used to apply the ink.

Waite & Saville of Falcon Works, Otley was established by Fred Waite and Jason Saville, a Bradford engineer, in 1892. They built the first newspaper wrapping machine. Their relatively cost-effective Waite & Saville die-stamp

Face value: B  
Date of issue: 20. 1. 2022  
Designer: Milan Bauer



print presses have been used for decades for the production of Czechoslovak, Czech, and Slovak postage stamps recess printed from flat steel plates. Paper sheets are fed in the press with the hand-printed page facing upwards. They are laid out on the horizontal delivery board so that they fit the adjusted stop positions. The printing is remarkably smooth and precise. The press is controlled by a camshaft that drives the double crank mechanism. It generates a high stamping force and guarantees a certain time lag before the print carriage lands. The inking roller then inks





# Molière



The stamp depicts Molière with a writing quill in his hand. He has just been inspired and is writing a play. The key scene from *Tartuffe* takes place on the stage in the background, with Orgon climbing out from under the table where he was hidden to test the true nature of the hypocritical *Tartuffe*. The motif designed on the first day cover captures a scene from *The Imaginary Invalid*. The hypochondriac Argan is being taken care of by his physician and a maid-servant who is fluffing his pillow. The scene is framed by things related to the theme, such as a potty, enema, and apothecary jars - one containing mummy powder and another one with dragon's blood, with different tablets scattered around. The apothecary mortar dated 1673 refers to the year when *The Imaginary Invalid* was written and successfully premiered by Molière, who was also among the cast. The sun in the cancellation mark bears two meanings. The sun rising from the theatrical mask represents the sunny spirit of

Face value: CZK 23  
Date of issue: 20. 1. 2022  
Designer: Karel Zeman



Molière's comedies. The second sun image symbolises Louis XIV, known as the Sun King, who provided patronage to Molière.

Molière was a French playwright and actor. In his plays, he often ridiculed society and church. Jean-Baptiste Poquelin was born in Paris in 1622. His mother died when he was 10 years old. His father was a court upholsterer. Jean-Baptiste studied at the Jesuit Collège de Clermont, but was expected to take over his father's business. In 1643, he decided to abandon his current way of life and began a life in the theatre. as one of the most successful European comedy writers in the Classical era. He wrote more than 30 plays and acted in dozens of others. Molière died in Paris on 17 February 1673 at the age of 51 years.



FDC

Face value: CZK 19  
Date of issue: 16. 02. 2022  
Designer: Eva Hašková



## Personalities: Miloš Forman



The central motif on the stamp is a very civil portrait of Miloš Forman, which is complemented by a film strip with his name and his birth and death years. The first day cover depicts the Statue of Liberty, also complemented by a film strip that replaces the flame. The cancellation mark consists of a very aptly inscribed director flap.

The life of Miloš Forman, one of the world's most famous and respected directors, was not easy. He was born in Čáslav on 18 February 1932. Both of his parents died in a concentration camp, so he grew up in a children's home. Although he originally wanted to study theatre art, he was admitted for a degree in screenwriting at the Film and Television School of the Academy of Performing Arts (FAMU) in Prague. He worked as an assistant to director Alfred Radok during his studies. He also met very early with Otakar Vávra and other professionals who were behind the emergence of the so-called Czechoslovak new wave. The scathing dark humour in Forman's first films attracted attention and he began to collect prizes, the first one for the film *Black Peter* at the Locarno Film Festival. During the normali-

sation era, he left legally for the United States. Forman's first film that achieved great overseas success, *One Flew Over the Cuckoo's Nest*, was awarded five Academy Awards, including those for Best Director and Best Film. His most popular film, *Amadeus*, won eight Academy Awards out of eleven nominations, including two major wins. *Valmont* and *The People vs. Larry Flint* were again hugely popular with the audience. He won the Golden Bear at the Berlin Film Festival for the latter. Forman last film, *Goya's Ghosts*, and a new staging of Suchý and Štítr's jazz opera *A Well-Paid Walk* are also worth mentioning. Forman died suddenly on 13 April 2018 at the age of 86 years.



## Works of Art on Postage Stamps: Czech Gothic murals

Face value: CZK 34, CZK 40

Date of issue: 16. 02. 2022

Designer: Jan Kavan



This year's miniature sheet in the Works of Art on Postage Stamps series presents several astonishing Czech and Moravian Gothic murals. The background mural, connecting both stamps in the sheet, comes from the former St Anna's Church in Prague's Old Town. The quality of this *Assumpta* with the apostles Philip and James was absolutely unique at the time of its creation. It was still based on the pre-Hussite tradition of the Beautiful Style of the late 14<sup>th</sup> century and is attributed to the Master of the Třeboň Altarpiece.

The first stamp depicts a mural from the canteen of the altar of the imperial oratory in the Chapel of St Catherine in Karlštejn Castle. The very well-preserved *Crucifixion* is attributed to the so-called Master of the Karlštejn Apocalypse, who painted there around 1356. The first day cover shows Karlštejn Castle with yet another stylised painting from the chapel decoration: portrait of the founders of the castle, Charles IV and his wife Anna of Schweidnitz, who are raising the cross. The motif of the cancellation mark is based on the mural *The Woman Clothed with the Sun*, painted on the west wall of the Church of the Virgin Mary in

Karlštejn Castle. The second stamp presents a detail from the extensive cycle about the life of St Margaret. The cycle was discovered in 2010 during the restoration of the Chateau in Velké Meziříčí. This rare evidence documents the inspiration of early Gothic murals by illuminated manuscripts in this country. The first day cover depicts the entrance facade of the Chateau in Velké Meziříčí with yet another scene from the cycle about the life of St Margaret. The cancellation mark is also based on one of the stylised motifs of this cycle.

In Gothic painting, murals occupy an important place next to panel painting and book illuminations. Painted on the walls of churches as well as palaces and town houses, they were the kind of art most accessible to the public. Perceived as works of craft rather than art, most murals were not signed by the painter.





PRAHA / STARÉ MĚSTO  
BYVALÝ KOSTEL SV. ANNY



ČESKÉ A MORAVSKÉ GOTICKÉ NÁSTĚNNÉ MALBY

# Works of Art on Postage Stamps: Emil Filla



**Filla's work is represented on the stamp by his *Girl with a Mandolin*, suitably complemented by the *Head* on the first day cover.**

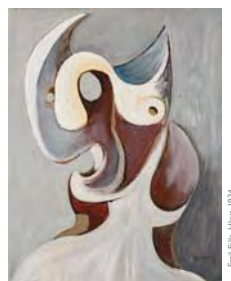
The Czech Cubist painter, graphic artist and sculptor Emil František Josef Filla was born in Chropyně in Moravia on 4 April 1882. He studied at the Academy of Fine Arts in Prague with Professors Franz Thiele and Vlaho Bukovac.

The 1905 exhibition of the Norwegian painter Edvard Munch in Prague turned to be crucial for Filla's creative profile and work. His contribution to the preparation and presentation of paintings at the 1907 and 1908 exhibitions of the Osma (The Eight) marked a milestone for Czech modern art. In 1909, as a leading talent of the upcoming generation, he was admitted to the Mánes association of artists and joined

**Face value:** CZK 39  
**Date of issue:** 08. 03. 2022  
**Designer:** Otakar Karlas



the editorial board of the *Volné směry* magazine published by the association. From 1911, he focused mainly on modern European art based in Paris, where he recognised the revolutionary importance of Picasso's and Braque's Cubism. During the outbreak of the First World War, Filla was still in Paris, from where he moved to the Netherlands for more than six years. After returning to Prague in 1920, he rejoined the Mánes artists' association. In 1945, he was appointed professor at the Academy of Arts, Architecture and Design in Prague. The changes and contradictions after the 1948 Czechoslovak coup d'état plunged Filla into new difficulties and contradictions, from which he sought a way out through the use of realistic motifs in his landscapes. Filla died in Prague on 6 October 1953.



FDC

ČESKÁ REPUBLIKA



© KANAL 2021

39 Kč

Divka s mandolinou, 1929  
EMIL FILLA (1882–1953), Galerie Kodl

ČESKÁ REPUBLIKA



© KANAL 2021

39 Kč

Divka s mandolinou, 1929  
EMIL FILLA (1882–1953), Galerie Kodl

ČESKÁ REPUBLIKA



© KANAL 2021

39 Kč

Divka s mandolinou, 1929  
EMIL FILLA (1882–1953), Galerie Kodl

ČESKÁ REPUBLIKA



© KANAL 2021

39 Kč

Divka s mandolinou, 1929  
EMIL FILLA (1882–1953), Galerie Kodl

# Common Czech and Slovak Stamp: 150 Years of the Košice-Bohumín Railway

**Face value:** CZK 58  
**Date of issue:** 18. 03. 2022  
**Designer:** Dušan Kállay

The designer uses the symbolic motifs of a railway engine with a historical map shown in the background of the miniature sheet. The strategic location of Těšín (Cieszyn in Polish) Silesia has made the region into a major transportation hub. For instance, the road connecting Vienna and Krakow passed through the town of Těšín. The development of railways in the second half of the 19th century significantly influenced the development of the entire region. The Košice-Bohumín Railway was the most important railway line passing through the region. This track con-



ected Bohumín with Košice. The construction work began in the autumn of 1867 by building the section from Bohumín to Těšín. This section was put into operation on 5 May 1869. The second section from Těšín to Žilina was put into operation on 8 January 1870. The entire railway was completed on 18 March 1872 when the final section between Žilina to Košice was finished. The strategic importance of the Košice-Bohumín Railway became clear during the First World War and, even more so, after its end when a two-year dispute broke out between the newly formed states of Czechoslovakia and Poland over the right to Těšín Silesia. Obtaining the whole course of the track became one of the main goals of both parties. The railway company remained private until 1921 when most of its stock was acquired by the Czechoslovak government.



Face value: B  
Date of issue: 06. 04. 2022  
Designer: Adolf Absolon



The stamp depicts the upper tunnel portal of the Schwarzenberg Canal. The first coupon presents the lower tunnel portal at Jelení vrchy. The second coupon shows the monument erected at the beginning of the canal to commemorate the canal builder Josef Rosenauer. The first day cover portrays the founder of the canal, Prince Jan Nepomuk Schwarzenberg, wearing the ceremonial robes of the Order of the Golden Fleece. The line drawing in a decorative cartouche in the cancellation mark on the first day cover refers to the year 1793 when the canal was completed and opened for log driving.

The Schwarzenberg Canal is an amazing technical work built on the initiative of Prince Jan Nepomuk Schwarzenberg. The construc-

FDC

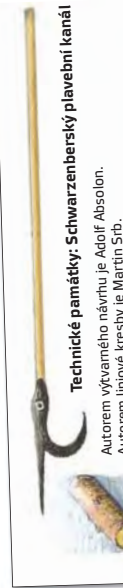


## Technical Monuments: Schwarzenberg Canal



tion began in 1789 and log driving started in 1793. It was designed by Josef Rosenauer. The 44-kilometre long canal begins below the Špičák mountain and ends in Austria by the Große Mühl river. The overall slope of 255 m made it difficult for Rosenauer to level the canal at a steady slope of 2.5 to 7 mm per metre in the hilly region covered by forest. An almost 400 metre long section of the canal leads through a tunnel.

During the approximately 100 years of use of the canal, almost 8 million cubic metres of firewood were transported to the Große Mühl. Log driving to Vienna was discontinued in 1892 due to the cheaper and faster transportation by rail. Around 1900, long logs replaced firewood logs in the log driving operations on the Czech side of the canal. The canal continued to be used to carry logs to the Vltava river and further on to the wood log warehouse in Želnavá and later Nová Pec until 1961.



### Technické památky: Schwarzenberský plavební kanál

Autorem výtvarného návrhu je Adolf Absolon. Autorem liniové kresby je Martin ŠtB.

Schwarzenberský plavební kanál je úžasně technické dílo, které bylo vybudováno z podnětu knížete Jana Nepomuka Schwarzenberga. Práce byly zahájeny roku 1789 a plavební díry začalo v roce 1793. Kanál vyprojektoval Josef Rosenauer. Měří 44 km, začíná pod horou Spíček a končí v Rakousku na řece Grosse Mülli. Celkový spád je 255 m a stavitel Rosenauer měl nelehký úkol, nveličním měřením v horském zalesněném terénu vytvořit stáły spád 2,5 až 7 mm na metr délky. Část kanálu v délce téměř 400 m je vedena tunelem.

Na známce je horní portál tunelu. Na prvním kuponu je dolní portál kanálu v obci Jelení. Nadruhem kuponu je pomník stavitele Rosenauera.

...sbíratel B.



## SCHWARZENBERSKÝ PLAVEBNÍ KANÁL



Face value: E  
Date of issue: 06. 04. 2022  
Designer: Renáta Fučíková



## EUROPA: Stories and myths



The theme of the 2022 stamp in the EUROPA series is Stories and Myths. As every year, the theme was chosen by PostEuropa as a common theme for all participating postal administrations. The stamps should present their traditional stories, especially those that relate to the early human history or explain a natural or social phenomenon, typically with the involvement of supernatural beings or events.

The Czech stamp depicts two mythical figures of Czech history, Libuše and Přemysl. The first day cover presents a bronze jewel found by archaeologists with a scene similar to the one shown on the stamp but seen by a designer more than a thousand years earlier. The cancellation mark on the first day cover uses the motif of a spiral with the ends connected into an endless loop.



Libuše, one of the three daughters of the Czech ruler Krok, was a legendary Czech princess and wife of Přemysl the Ploughman. She became famous as a prophetess who foretold the glory of the city of Prague, founded by her. Princess Libuše married Přemysl the Ploughman and together established the oldest Czech ruling dynasty of the Přemyslids.

# Czech Actors and Actresses: Stella Zázvorková and Jan Werich

## Face value:

CZK 30 and CZK 34

**Date of issue:** 06. 04. 2022

**Designer:** Jan Maget



Stella Zázvorková was born in Prague on 14 April 1922. Stella Zázvorková was an alumnus of Prague's theatre school of E. F. Burian. In the 1940s, she appeared on the stage of the Větrník Theatre. Later, she joined the Realistic Theatre and the E. F. Burian Theatre companies. Jan Werich hired her to act at the ABC Theatre in 1955. When the ABC Theatre merged with the Prague City Theatres, she became a member of the latter company where she remained until 1990. Her film roles are equally unforgettable. She appeared in films that belong to the best Czech and Czechoslovak films. She is fondly remembered as the energetic wife in comedies such as *Anděl na horách*, *Pane, vy jste vdova!*, *Zítřka to roztočíme*, *drahoušku...!*, *Jak utopit dr. Mráčka aneb Konec vodníků v Čechách*, or for her more recent roles in *Kolja*, *Pelíšky*, *Kytice* and *Babí léto*. Zázvorková is one of the few actresses to be remembered by several generations (including the youngest one) for her theatre, film and television series roles. Stella Zázvorková died in Prague on 18 May 2005.



FDC

Jan Werich was a Czech film and theatre actor, playwright and screenwriter. He was born in Prague on 6 February 1905. He met his later theatre partner Jiří Voskovec at Masaryk Grammar School in Křemencova Street in Prague. In 1927, the couple staged an amateur theatrical performance called *Vest Pocket Revue*. They continued working together first in the Liberated Theatre and then under the banner of the so-called Handcuffed Theatre, where they performed one of their most daring plays, the *Rag Ballad*. After their return from the forced exile during the Second World War, Werich and Voskovec founded the famous V+W Theatre. After Jiří Voskovec went back into exile in 1948, Jan Werich worked in various theatres in Prague. From 1955, he managed the Satire Theatre, which he renamed the ABC Theatre, where he also met Stella Zázvorková. Jan Werich died in Prague on 31 October 1980.



FDC



# 50 Years of the Philatelic Youth Olympiad

Face value: B

Date of issue: 18. 05. 2022

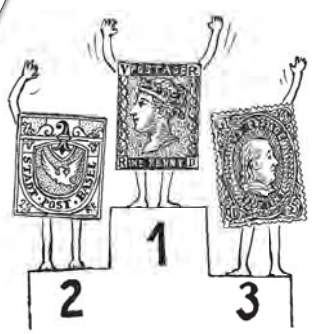
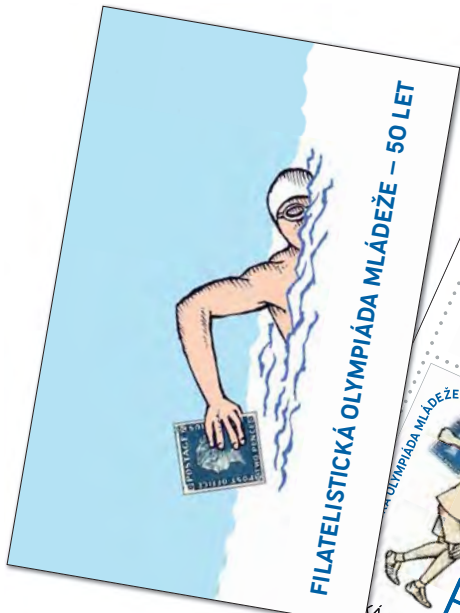
Designer: Jiří Slíva



The stamp shows a young boy holding a postage stamp in his hand. The boy's stance symbolically resembles that of a discus thrower. The first day cover also uses sports symbols, this time by depicting world postage stamps placed on an imaginary winner podium like athletes. The cancellation mark on the first day cover contains a line drawing with a baseball hat with a small image of the stamp, as an expression of the connection between youth, philately and the related Philatelic Youth Olympiad.

The Philatelic Youth Olympiad is a competition established in Czechoslovakia as early as 1970. The charter and the idea of the Philatelic Youth

Olympiad were published in the *Filatelie* magazine. The competition always took place during the school year, with the first annual event being held in the school year of 1971-1972. The finals of the first annual competition were organised by the young stamp collectors club "Great Moravia" No. 56-10 in the Children's House in Hodonín, with competitors coming from five clubs. The event and its charter were taken over by the Youth Committee of the Union of Czechoslovak Philatelists. For 50 years, it has been the Union's top annual nationwide event. Every year, competition topics from all areas of life, nature, technology, etc. were announced. After the split of Czechoslovakia into the Czech Republic and the Slovak Republic, the Union of Slovak Philatelists smoothly continued to organise the annual Philatelic Olympiad events. During the half-century of the competition, hundreds of presidents of young collectors clubs and other philatelic officials took part in its organisation.



FDC

# 150 Years of the Czech Beekeepers' Association



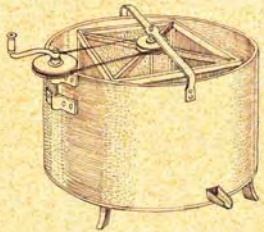
The Czech Beekeepers' Association has a long-standing and rich history. The current association is the result of a very complex organisational development during the 19th and 20th centuries. It started with the Beekeeping Association for Bohemia founded on 22 March 1872. In 1884, it was renamed the Provincial Central Beekeeping Association for the Kingdom of Bohemia in Prague. The regional history of beekeeping was equally complex. In Moravia, the Provincial Headquarters of Beekeeping Associations were established in 1898. It was preceded by the Regional Central Beekeeping Association for the Duchy of Silesia formed in Silesia in 1893. After the First World War, the continued efforts at unification of the beekeeping organisations led to the creation of the Union of Provincial Central Beekeeping Associations in the Czechoslovak Republic in 1921. Its activities were gradually restricted after 1938, until the union was dissolved by a government decree of the Ministry of Agriculture of the Protectorate of

**Face value:** CZK 23  
**Date of issue:** 18. 05. 2022  
**Designer:** Mikuláš Kavan



Bohemia and Moravia in 1943. After the Second World War, the Beekeepers' Union was founded in Prague in 1947. In 1957, the Beekeepers' Union was transformed into the Czechoslovak Beekeepers' Union. In 1971, after the formation of an independent Slovak Beekeepers' Association, the founding congress of the Czech Beekeepers' Association took place. Since then, the Czech Beekeepers' Association has existed with essentially the same organisational structure. The main tasks of the Czech Beekeepers' Association include improving the professional and social level of its members, working with young people and recruiting them as beekeepers.





# Czech Presidency of the Council of the European Union

**Face value:** E  
**Date of issue:** 15. 06. 2022  
**Designer:** Filip Heyduk

The presidency of the Council of the EU, that is to be taken on by the Czech Republic for the second time on 1 July 2022, is a very challenging task, but also an important right arising from membership in the European Union. It is an important tool for influencing the everyday running as well as the direction and the face of the European Union. The Member States chair the Council of the EU alternately, according to a predetermined schedule, three at a time. The Czech Republic will be joined by France and Sweden. The three states have been preparing a joint programme. The term of office always lasts 6 months, during which time the presiding states acquire a number of powers and perform a number of functions as well as influence the agenda and priorities of the Council of the EU. They guide EU

policy in pursuing the interests of individual Member States and represent the Council of the EU in negotiations with a number of European and international organisations.

The Office of the Government cooperates with individual ministries, headed by the Ministry of Foreign Affairs and the Permanent Representation of the Czech Republic to the EU, and the Committee for European Affairs will play a coordinating role.

The presidency will be an opportunity for a positive presentation of the Czech Republic abroad as well as for improving the general public's awareness of the European Union and its governance and role in Europe.

**Face value:** E  
**Date of issue:** 15. 06. 2022  
**Designer:** Miroslav Roubíček



## International Council of Museums (ICOM) General Conference Prague



Founded in 1946, the International Committee of Museums (ICOM) is the world's only museum association and one of the world's leading professional organisations. The main task of ICOM is the presentation and preservation of museums as well as the past and present cultural and natural heritage, both tangible and intangible, for the future. Since its foundation, it has brought together about 3,500 museums around the world, assembled in 119 national councils and representing almost 50,000 museums workers and museum scientists, in a single organisation. ICOM's General Conference, held every three years, is the association's supreme assembly. It is attended by directors, executives and other experts from museums and galleries, public administration and the private sector around the world.

Czech museums are an important social phenomenon that contributes to the creation of Czech, European and world cultural identity. The number of about 65 million objects in Czech museum collections is extraordinary worldwide. The museum infrastructure is also relatively dense and the value of many objects

in museum collections, such as the Venus of Dolní Věstonice – the oldest ceramic statuette of a nude female figure in the world – or the machine for producing the first soft contact lenses in the world, exceed the regional context. Czech museum scientists also played a significant role in shaping European and world museum history. Since 1977, ICOM has also coordinated the International Museum Day celebrated in more than 150 countries worldwide on 18 May.



## Young Animals: Kittens

Face value: B, B  
Date of issue: 15. 06. 2022  
Designer: Jitka Mašíňová



This year's stamp in the Young Animals series features kittens.

The first part including the stamp, first day cover and cancellation mark is dedicated to the Bengal cat, or more precisely to the kitten of this cat. Bengals are a unique and very modern breed. The combination of a wild appearance and temperament with a friendly, trusting and curious nature is a guarantee of a lot of fun. Kittens are smart and obedient, but need to be given constant attention not only by cuddling and playing, but by targeted training and a diverse environment in which they do not get bored. Unlike other cats, Bengals like water. An adult Bengal cat weighs up to 10 kg. Bengals are powerfully built, muscular with heavy bones. They have a smaller head, an aerodynamic body shape, and the original wild appearance. The hind legs are longer than the front, which is the last remnant of the wild Bengal cat. Bengals' meowing sounds like a hoarse bark.

Persian kittens were selected for the second part including the first day cover and the



cancellation mark with a stylised image of a Persian kitten. Persians are one of the oldest cat breeds in the world. They reached Europe as early as the seventeenth century and quickly became a symbol of power and wealth. Despite the name, the breed does not come from Persia. Although the cat's targeted breeding began around 1870 with the original intention of preserving the cute face, it gradually refocused

on developing new colours until it reached the currently available more than 60 different coat colours. In addition to their specific facial expression, Persians are considered attractive for their long, rich and fine plush hair, which is very difficult to maintain. Nevertheless, it has long been one of the most common cat breeds in this country.

Bengálská kočka



FDC



FDC

Perská kočka

Original artwork

Bengálská kočka



FDC



FDC

Perská kočka

Line drawing

## Nature Protection: Mácha's Region

**Face value:** CZK 23,  
CZK 26, CZK 27, CZK 30  
**Date of issue:** 07. 09. 2022  
**Designer:**  
Jaromír and Libuše Knotek

For almost 100 years, Mácha Lake and its surroundings have been one of the top recreational areas in this country, and it is currently probably the most famous summer recreation centre in the Czech Republic. It belongs to the Kokořínsko protected landscape area. The main attraction of the region is the large lake with the twin peaks of the Malý and Velký Bezděz hills with the ruins of a Gothic castle. The surroundings of the lake host a famous nature reserve with a unique wetland and peat-bog plants and protected and critically endangered species of aquatic and swamp animals. The adjacent Břežyňský and Novozámecký ponds are included in the network of the most important European ornithological reserves. Endemic and rare plant species grow in multiple protected areas, such as the Swamp, Konvalinkový vršek, Pecopala, Sluneční dvůr, around the ponds. The common butterwort (*Pinguicula vulgaris*) and the marsh orchid *Dactylorhiza bohemica* can only be found in that small area. Further rare plant species include *Ligularia sibirica*, wild rosemary (*Rhododendron tomentosum*), bog star (*Parnassia palustris*), globeflower (*Trollius altissimus*). Second only to the White Carpathians,

the region boasts numerous orchid species, such as the lesser butterfly-orchid (*Platanthera bifolia*), fen orchid (*Liparis loeselii*), *Dactylorhiza maculata*. Surprisingly, the very rare common crane (*Grus grus*), which needs large wetlands and complete peace to courtship, nests in the region. Other rare animals, which can be spotted there, include bearded reedling (*Panurus biarmicus*), common snipe (*Gallinago gallinago*), moor frog (*Rana arvalis*). The Malý Bezděz hill is the only place in the country to find the critically endangered Alpine longhorn beetle (*Rosalia longicorn*). Last but not least, a pack of wolves has been monitored in the region for the last few years.



FDC

# Máchův kraj – PŘÍRODA V OKOLÍ MÁCHOVA JEZERA



Vážka jasnošvarmá  
*Leucorrhinia pictipennis*



Hrad Bezděz

J. L. Knotkovi 2022



Lilie zlatohlávek

*Lilium martagon*

ČESKÁ REPUBLIKA

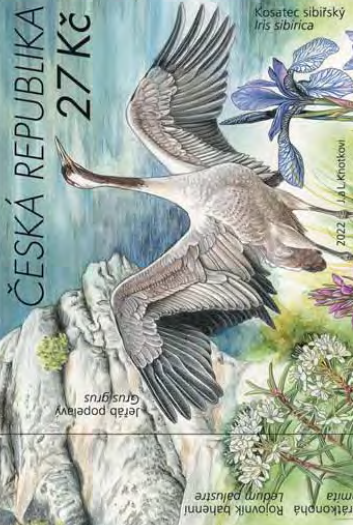
23 Kč



Česárik alpský  
*Rosalia alpina*

Kalina obecná  
*Viburnum opulus*

Populávka sibiřská  
*Ligularia sibirica*



Jeřáb popelavý  
*Grus grus*

Kosaček sibiřský  
*Iris sibirica*

ČESKÁ REPUBLIKA

27 Kč



Labuť velká  
*Cygnus olor*

J. L. Knotkovi 2022

ČESKÁ REPUBLIKA

26 Kč



Podiceps rohák  
*Podiceps cristatus*

Cervenáček ohnivý  
*Pyrochroa coccinea*

Prstnatce plaměná  
*Dactylocteniza maculata*

Sýkorec vousatý  
*Parus biarmicus*



Ropucha křatkonohá  
*Rana clamita*

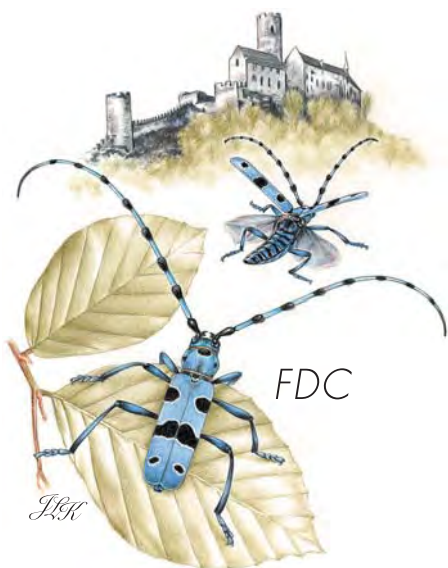
Prstnatce český  
*Dactylocteniza bohemica*

Motýlice lesklá  
*Calopteryx splendens*

Upolín nejvyšší  
*Trollius altissimus*

Rosnička okružníholná  
*Pinguicula lusitanica*

Tučňice česká  
*Pinguicula bohemica*



**Face value:** CZK 27, CZK 33

**Date of issue:** 07. 09. 2022

**Designers:**

Eva Hašková and Jan Maget

## Emil Zátopek and Dana Zátopková

**The whole issue is reminiscent of the success of a married couple of prominent Czechoslovak athletes, Olympic winners, people who embodied Olympic ideas and values.**

Emil and Dana Zátopek were born on the same day, 19 September 1922.

Emil Zátopek was born into a poor family. He started working at the age of sixteen in Bata's shoe factory, where the athletes of Bata's club tried to encourage his talent. Nevertheless, he initially failed to win. He had to develop his own training system, which started a series of stunning victories on endurance tracks. He became the first person to run 10 km in less than 29 minutes and 20 km in less than 1 hour. He became a legend during the Olympic Games in Helsinki in 1952, where he won the 5 km run, the 10 km run, and the marathon, which he ran for the first time in his life. He won the Olympic record in each of these disciplines.

In 1975, Zátopek was the first Czechoslovak athlete to receive the Pierre de Coubertin Award. In 1997, Emil Zátopek was declared the best Czech athlete of the 20<sup>th</sup> century. Emil Zátopek died in Prague on 21 November 2000.

His wife Dana, née Ingrová, was born into the family of a professional soldier and first tried athletics at a grammar school. After two years of training, in 1948, as the national champion, she represented Czechoslovakia at the Olympic Games in London. Like her husband, she achieved her greatest sporting success at the Helsinki Olympics. She won the gold medal in javelin throw on 24 July 1952, the same day that her husband Emil Zátopek won the gold medal in the 5 km run. Both medals were won in a few minutes' interval, and to this day they are the only registered couple who have won the Olympic Games in this way. After the end of her active athletic career, Dana continued working as a coach. She died in Prague on 13 March 2020 at the age of 97 years.

## Personalities: Jindřich Fügner



**This year's stamp in the Personalities series commemorates Jindřich Fügner on the occasion of the 200<sup>th</sup> anniversary of his birth.**

Jindřich Fügner is inextricably linked with the founding of the Czech sports movement Sokol (Falcon). He was born in Prague in 1822 into the family of a cloth merchant. He studied at a grammar school, but had to leave the school in the fifth grade for his liberal ideas and started working as a merchant. He broadened his economic and cultural horizons by visiting France, Germany, Belgium, Italy and England. In 1849, he opened an independent store but his work in it did not satisfy him. He paid more attention to his cultural and sports interests and continued self-education. He married in 1853, and a year later had a daughter Renáta. Renáta married her home teacher Miroslav Tyrš, who taught her for several years, in 1873. Fügner's patriotism further strengthened in the 1850s. Bach's absolutism, the

**Face value:** CZK 27  
**Date of issue:** 07. 09. 2022  
**Designer:** Eva Bartošová



study of Czech history, and examples of ancient heroes led Fügner to become a closer friend with Tyrš. During the happy fateful meeting of the two men in the Křivoklát region, the two men agreed on the details of implementing the magnificent idea of the Sokol movement. As the first president of the Sokol, Fügner became famous as an excellent organiser, a selfless, generous, anonymous sponsor of the movement, and a genuine democrat. Without his financial support, the movement would not have survived its early years. Unparalleled modesty, hard work, honesty, and constant friendliness as well as profound economic and cultural education were the main features of his personality. Fügner died on 15 November 1865 at the age of 43 years before the full development of the Sokol movement.



FDC

Face value: B  
Date of issue: 07. 09. 2022  
Designer: Otakar Karlas



The stamp depicts the Chudobín pine at a time of the maximum water level of the dam, when its beautiful appearance stands out best. The first day cover shows a house from the flooded village of Chudobín, which was sacrificed for the dam construction. The line drawing in the first day cancellation mark completes this theme.

The Chudobín pine is a solitary Scots pine (*Pinus sylvestris*) defiantly rooted on the rocky headland of a dam overlooking a village called Chudobín that was flooded in the 1950s to build the dam. The well-known tree was a frequent object of works by visual artists and photographers even before the dam construction. It is not only an important landmark, but also impressive evidence of high resilience to the vagaries of climate and human activity. It has been growing there for three hundred and fifty years.

Unlike the rising and falling water levels, the tree does not change much. Sometimes, its roots are just at the water level. Right now, it towers above it. The tree is mechanically stable and relatively

## Nature Protection: The Chudobín pine



healthy, although it shows signs of reduced vitality due to prolonged drought and probably also water level fluctuations. At maximum swelling of the water reservoir, the root system of the pine is usually completely flooded by water. At low water levels, on the other hand, the pine rises more than 20 m above the dam level. In 2020, the Chudobín pine, nicknamed a Guardian of the Flooded Village, was voted European Tree of the Year.



# St Wenceslas Rotunda in Prague

**Face value:** B  
**Date of issue:** 21. 09. 2022  
**Designer:** Otakar Karlas

According to legend, the rotunda was erected on the site where a carriage with the dead body of St Wenceslas stopped on 4 March 932 (or 938). The legend has it that the animals pulling the wagon refused to move on until some unjustly imprisoned people were released from the nearby prison.

In the High Middle Ages, the rotunda served as a funeral chapel and adjoined the nearby parish church of St Nicholas. After the Battle of White Mountain, when the church of St Nicholas was donated to the Jesuits, the rotunda was rebuilt in Baroque style (in the years 1628–29) and became a church belonging to the Lesser Town parish administration. In the second half of the 17<sup>th</sup> century, the Jesuits began construction of a new complex of buildings in the area, which eventually led to the demolition of this Romanesque sanctuary and its replacement by the newly built Baroque church of St Wenceslas. The remaining torso of the former rotunda remained hidden in the foundations of the Baroque buildings.

In 2003, during the remodelling of the buildings of the Faculty of Mathematics and Physics in

the Lesser Town, the works in the so-called Professional House began to be complicated by unknown blocks of masonry, which were first designated as Baroque cellars. It later turned out that there was no entrance to them, so it had to be a crypt. After dismantling the crypts, three pieces of circular Romanesque masonry appeared between the remaining walls, and it soon became clear that it must be the legendary rotunda. The most significant discovery was the remaining part of the original Romanesque floor, which made the rotunda one of the leading Romanesque monuments in the Czech Republic. The fragment consists of 74 tiles of three shapes arranged in five rows. It belongs to the oldest type of Czech medieval terracotta floors. Furthermore, a part of a circle made of flat sand marl stones, fitted and worked on the inside, was uncovered. The circle dates back to the 10<sup>th</sup> century and its significance is not yet known.

In 2014, the rotunda was remodelled and in 2015 it was opened to the public as part of the European Heritage Days event.

**Face value:** E  
**Date of issue:** 12. 10. 2022  
**Designer:** Pavel Sivko

# European Stamp Exhibition LIBEREC 2022

The European Stamp Exhibition and Polar Salon LIBEREC 2022 will take place from 13 to 16 October 2022 in the Wellness Hotel Babylon in LIBEREC. The specialised European exhibition of postage stamps and the Polar Salon LIBEREC 2022 will be held with the patronage of FEPA and also with the recognition of FIP. The exhibits will compete in the following classes: FEPA Grand Prix Class; Tra-

ditional Philately; Postal History; Thematic Philately; Open Philately; Picture Postcards; Youth Philately; Astrophilately; Philatelic Literature; One-Frame Exhibits. The Polar Salon will present exhibits of extraordinary significance comparable to the most interesting exhibits that occur in general philately. The LIBEREC 2022 exhibition should be accompanied by many events.

## The Landscape for Breeding and Training of Ceremonial Carriage Horses at Kladruby nad Labem

**Face value:** CZK 26, CZK 30, CZK 34, CZK 40

**Date of issue:** 12. 10. 2022

**Designer:** Jan Kavan

The miniature sheet of four stamps is entirely dedicated to the depiction of the National Stud at Kladruby nad Labem, set in a unique landscape of the Elbe region around Kladruby, cultivated for half a millennium for horse breeding. The first stamp shows a part of the stud with a mare and a foal of the Kladruber horse breed. The second stamp also depicts a part of the stud with a foal. The remaining two stamps share the motif of a four-in-hand with a coach. One stamp portrays the first two horses and the other stamp shows the remaining two horses and a part of the coach with the coachman. The other products of the issue feature the same motif of the Kladruber horse breed. One of the two first day covers portrays the head of a mare with a foal and the other one the head of a Kladruber stallion with the typical Roman nose. Horse breeding in Kladruby nad Labem can be dated back to around 1491, when the estate was bought by the Pernštejns. In 1560, a game reserve was added to the estate, where a stud was built later. Emperor Rudolf II granted the stud the status of an imperial court stud. Despite some difficult periods, the stud has remained in the same place to this day.

This makes the landscape of the Elbe river alluvial plain around Kladruby the only preserved and still used landscape in the world, which has been purposefully adapted for several centuries for the training and breeding of draft horses. It combines two categories of cultural landscape: a living, organically developing landscape with a predominantly functional purpose and a landscape intentionally designed by man. Elements of the French garden, such as symmetrical paths, alleys and lines of trees and shrubs, are designed to match the purposes of training of ceremonial carriage horses. They are combined with elements of English landscaping based on a wide range of trees and an elaborate grid of fields, meadows and forests to create a perfect landscape reflected in the surface of numerous lakes and the Elbe river. The ornamental Classicism farmhouse in its heart has become an integral part of the landscape, which does not stand out but deliberately fits into the landscape composition and respectfully lets its beauty stand out during the seasonal changes. The area of the National Stud at Kladruby nad Labem is a breeding station for white Kladrubers. Along with the surrounding landscape, it has been included in the World Heritage List in 2019.

**Face value:** CZK 59  
**Date of issue:** 09. 11. 2022

## Works of Art on Postage Stamps: Jaroslav Panuška

Jaroslav Panuška was a Czech painter of landscapes and ghost and fairy scenes. He was born in Hořovice on 3 March 1872. He painted his first watercolour at the age of eight, and at the age of ten, he secretly went to Karlštejn Castle to paint. In 1889, he was admitted to the Academy of Painting in Prague, where he studied with several interruptions, first with Professor Maximilian Pirner and later with the landscape painter Professor Julius Mařák. Panuška was one of the ten students who studied longest in Mařák's studio. He fully adopted his professor's aesthetics. During the studies, he began drawing and painting fantastic and spooky scenes, such as *Waterman*, *Monster*, *Marsh Fairies*, *Headless Horse*, *Nest of Robbers*, *Witch*, *Ghost of the Dead Mother*, that made him famous. After graduating from the Academy, he painted in many places in the Czech Republic including Pojizeří, Sedlčany, Beroun, Příbram and southern Bohemia, and visited the Balkans several times. Typical of him are his works from the turn of the century, related to symbolism and enriching anxious and haunting visions with a touch of grotesque. Fairy-tale motifs are also common. He illustrated the book *Summer Night*

written by Václav Říha and published in 1905. At around 1907, he started painting landscapes rich in colour and inspired with Impressionism. His best landscape paintings include mysterious views of ponds, swamps and water pools in the silent haze of early fog or moonlight, views of valleys from rocky hills or rolling storm clouds over the landscape. The colour composition of his paintings, which does not avoid black and dark blue, is based on shades of grey, brown and olive green and creates a natural counterpart to the bright colours of his peers. He was able to masterfully combine his typical colour range, supplemented by ochre, with the colour of the sea (*Sea with a dark sky*, *Sea and rocks and Fragment from Epidaurus*). His interest in history and archaeology found its way into paintings inspired by the past, such as painted reconstructions of prehistoric settlements and ancient monuments. Panušek's work is very extensive; the number of his paintings can be estimated at several thousand, with no fewer drawings. Jaroslav Panuška died in Kochánov near Světlá nad Sázavou on 1 August 1958.

# THE CZECH POST COUNTERS SELLING PHILATELIC GOODS



## Prodejna známkové tvorby

Jindřišská 14, 111 21 Praha 1  
znamkova.tvorba@cpost.cz  
přepážka č. 30



## Prodejna PostFila

Ortenovo nám. 542/16, 170 24 Praha 7 – Holešovice  
Tel.: +420954400872, e-mail: postfila@cpost.cz,  
www.ceskaposta.cz

**Poštovní muzeum**, Nové Mlýny 2, 110 00 Praha 1

**Pošta Praha 01**, Kaprova 40/12, 110 01 Praha 1

**Pošta Praha 012 – Hrad**, III. nádvoří, 119 00 Praha 4

**Pošta Benešov u Prahy 1**, Poštovní 478,  
256 01 Benešov u Prahy

**Pošta České Budějovice 1**, Senovážné nám. 1,  
370 01 České Budějovice 1

**Pošta České Budějovice 13**, České Vrbné 2327,  
370 13 České Budějovice 13

**Pošta Jindřichův Hradec 1**, Husova 129,  
377 01 Jindřichův Hradec

**Pošta Třeboň**, Seifertova 588, 379 01 Třeboň

**Pošta Dačice**, Göthova 71/I, 380 01 Dačice

**Pošta Český Krumlov 1**, Latrán 193,  
381 01 Český Krumlov 1

**Pošta Prachatice**, Pivovarská 1118, 383 01 Prachatice

**Pošta Strunkovice nad Blanicí**, nám. B. Havlasý 86,  
384 26 Strunkovice nad Blanicí

**Pošta Volary**, Náměstí 25, 384 51 Volary

**Pošta Strakonice 1**, Podskalská 601,  
386 01 Strakonice 1

**Pošta Blatná**, T. G. Masaryka 293, 388 01 Blatná

**Pošta Vodňany**, Kampanova 591, 389 01 Vodňany

**Pošta Tábor 1**, Žižkovo náměstí 10, 390 01 Tábor 1

**Pošta Tábor 2**, U Bechyňské dráhy 2926,  
390 02 Tábor 2

**Pošta Veselí nad Lužnicí 1**, ČSA 582/I,  
391 81 Veselí nad Lužnicí 1

**Pošta Pelhřimov**, Svatovítské náměstí 126,  
393 01 Pelhřimov

**Pošta Písek 1**, Žižkova třída 270/2, 397 01 Písek 1

**Pošta Plzeň 1**, Solní 20, 301 00 Plzeň 1

**Pošta Ostrov nad Ohří**, Hlavní třída 800, 363 01 Ostrov

**Pošta Plzeň 23**, alej Svobody 1274/21 323 00 Plzeň

**Pošta Rakovník 1**, Husovo náměstí 21, 269 01 Rakovník

**Pošta Kdyně**, Náměstí 139, 345 06 Kdyně

**Pošta Rokycany 1**, Jiráskova 247, 337 01 Rokycany

**Pošta Klatovy 1**, Nádražní 89/III, 339 01 Klatovy 1

**Pošta Domažlice 1**, Msgre. B. Staška 71,  
344 01 Domažlice 1

**Pošta Tachov 1**, Hornická 1596, 347 01 Tachov

**Pošta Karlovy Vary 1**, T. G. Masaryka 1,  
360 01 Karlovy Vary 1

**Pošta Ústí nad Labem 1**, Masarykova 3120/34,  
400 01 Ústí nad Labem 1

**Pošta Jablonec nad Nisou 1**, Liberecká 32/2,  
466 01 Jablonec nad Nisou

**Pošta Litoměřice 1**, Na Valech 722/18,  
412 01 Litoměřice

**Pošta Chomutov 2**, Dr. Farského 4732,  
430 02 Chomutov 2

**Pošta Vejprty**, náměstí T. G. Masaryka 1241/0,  
43191 Vejprty

**Pošta Most 1**, Moskevská 5/5, 434 01 Most 1

**Pošta Liberec 1**, nám. Dr. E. Beneše 559/28,  
460 01 Liberec 1

**Pošta Česká Lípa 1**, náměstí T. G. Masaryka 194/27,  
47001 Česká Lípa

**Pošta Nový Bor**, nám. Míru 55/0, 473 01 Nový Bor

**Pošta Harrachov v Krkonoších**, Harrachov 152,  
512 46 Harrachov

**Pošta Semily**, Husova 9, 513 01 Semily

**Pošta Jilemnice**, Geologa Pošepného 380,  
514 01 Jilemnice

**Pošta Hradec Králové 2**, Zamenhofova 915/2,  
500 02 Hradec Králové 2

**Pošta Hradec Králové 3**, Pospíšilova 215/11 A,  
500 03 Hradec Králové 3

**Pošta Jičín 1**, Šafaříkova 142, 506 01 Jičín 1

**Pošta Pardubice 2**, Palackého 1233,  
530 02 Pardubice 2

**Pošta Úpice**, Palackého 1096, 542 32 Úpice

**Pošta Náchod 1**, Masarykovo náměstí 43,  
547 01 Náchod 1

**Pošta Ostrava 30**, Bohumíra Četyny 1047/12,  
700 30 Ostrava 30 – Bělský les

**Pošta Karviná 1**, Masarykovo nám. 3/2,  
733 01 Karviná – Fryštát

**Pošta Havířov 1**, Dlouhá 464/7a, 736 01 Havířov 1

**Pošta Frýdek-Místek 1**, Sadová 2379,  
738 01 Frýdek-Místek 1

**Pošta Nový Jičín 1**, K nemocnici 206/11,  
741 01 Nový Jičín 1

**Pošta Opava 1**, U Fortny 49/10, 746 01 Opava 1

**Pošta Přerov 2**, Kratochvilova 114/4,  
750 02 Přerov I – Město

**Pošta Olomouc 2**, Jeremenkova 19, 772 00 Olomouc 2

**Pošta Šumperk 1**, Gen. Svobody 100/13,  
787 01 Šumperk 1

**Pošta Krnov**, nám. Minoritů 88/11, 794 01 Krnov

**Pošta Jihlava 1**, Masarykovo nám. 432/8,  
586 01 Jihlava 1

**Pošta Brno 1**, Orlí 655/30, 601 00 Brno

**Pošta Vsetín 1**, Mostecká 1144, 755 01 Vsetín 1

**Pošta Rožnov pod Radhoštěm 1**, Náměstí Miru 1268,  
756 61 Rožnov pod Radhoštěm 1

**Pošta Valašské Meziříčí 1**, Polášková 122,  
757 01 Valašské Meziříčí 1

**Pošta Zlín 1**, J. A. Bati 5648, 760 01 Zlín

**Pošta Kroměříž 1**, Spáčilova 3763/44, 767 01 Kroměříž

### **Inland cash on delivery consignments:**

**Česká pošta, s.p., Služby filatelistům**, Nákladní 29, 362 07 DEPO Karlovy Vary 70

**Tel.:** + 420 954 400 597, **e-mail:** filatelie.kv@cpost.cz

## Points of sale of Czech postage stamps abroad

### GERMANY

**Hermann E. Sieger**, Venusberg 32 - 34,  
D-73545 Lorch/Württemberg, fax: +49 7172 21438,  
e-mail: sieger@sieger.de

**Philagentur**, Feldbergstr. 57, D-61440 Oberursel,  
fax: +49 6171 628282, e-mail: info@philagentur.de

**Dr. Wolfgang Thiemann**, Am Schulzen Garten 25,  
D - 33829 Borgholzhausen,  
e-mail: dr.wolfgang.thiemann@t-online.de

### FRANCE

**Cercle Philatélique**, Jean Louis Bardelli,  
60 Avenue du Tech, F-66700 Argeles sur mer,  
e-mail: jlb66@orange.fr

### LITHUANIA

**UAB Neofila**, Savanoriu pr. 214A, P.O. Box 107,  
LT-50194, KAUNAS, 9-as paštas,  
e-mail: stamps@neofila.com

### SPAIN

**Hirschfeld Import - Export**, Javier de Gregorio,  
Plaza del Angel 16, 3rd B, E-28012 Madrid,  
fax: +34 91 3692138, e-mail: info@hirschfeld.es

### U.S.A.

**Bombay Philatelic Inc.**, P.O. Box 301, Wake Forest,  
N.C. 27588, tel: +1 561 499 7990, fax: +1 561 499 7553  
e-mail: sales@bombaystamps.com

### JAPAN

**Japan Philatelic Agency**, Atten: Ryan Enomoto,  
Kamitakaido 3-1-9 Suginami-ku, Tokyo 168-0074,  
fax: +81 33304 5778, e-mail: enomoto@agcy.co.jp

**COPYRIGHT** © 2022 Česká pošta, s. p., Prague. • **AUTHORS:** David Beer, Martin Holý, Lenka Briganová, Michaela Petrusová, Hedvika Tesařová; Text sources: wikipedia.org(6, 7, 8, 10, 15, 16, 20, 29, 31, 32, 35), J.Stefek(4), milosforman.com(7), J.Kavan(8), prazskakrizovatka.cz(8), ngp-prod.brainz.cz(10), ic-tesin.cz(11), mesto-bohumin.cz(11), A. Absolon(13), schw-kan.com(13), fdb.cz(16), J. Solc(18), vcelarstvi.cz(20), eurooskop.cz(22), vlada.cz(22), icom-czech.mini.icom.museum(23), mkcr.cz(23), zoothit.cz(24), J&L.Knotkovi(26), m.beskydyportal.cz(29), sokol-strasnice.cz(30), stromroku.cz(31), liberec2022.eu(33), nhkladruby.cz(34), jezdcı.cz(34), jaroslavpanuska.cz(35) • **TRANSLATOR:** RNDr. Klára Kašová. **GRAPHIC DESIGNER:** © 2022 David Vlček.

We reserve the right to make changes in the issue plan. All stamp, FDC, and cancellation mark images shown here are for illustration purposes only.

# České poštovní známky 2021 / Czech postage stamps



A1126



1115



1118



1134



1141



1147



1133



1139



1140



1117



1142



1104



1108



1111



1119



A1132



A1122



1145



1121



1107



1112



1116



A1143



1135



1109



1105



1110



1136



1137



1146



1120



1125



1106



1138



1113



A1144



A1124



A1130